

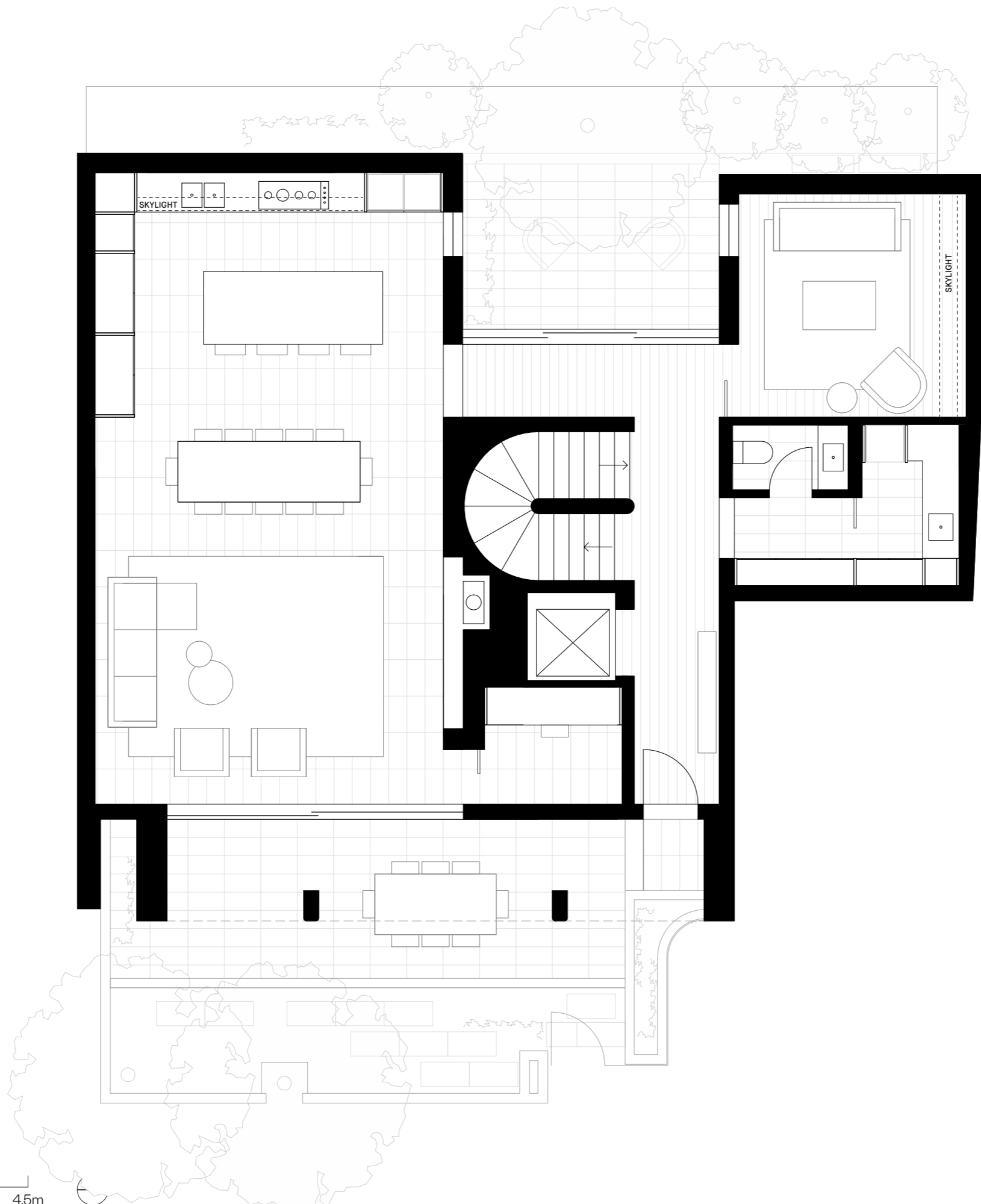
16 Irving Street — Malvern

Ground

Basement — 36m²
 Ground Floor — 135m²
 First Floor — 112m²
Total Internal — 283m²

Private Car park — 37m²
 External Terraces — 61m²
 Garden area — 35m²
Total Area — 416m²

Bed — 3
 Bath — 3
 Car — 2
 Study — 1
 Living — 1
 Separate Lounge — 1
 Second Floor Retreat — 1
 Lift — 1
 Storage/Cellar/Gym — 1



Scale 1:75
 0 1.5 3 4.5m

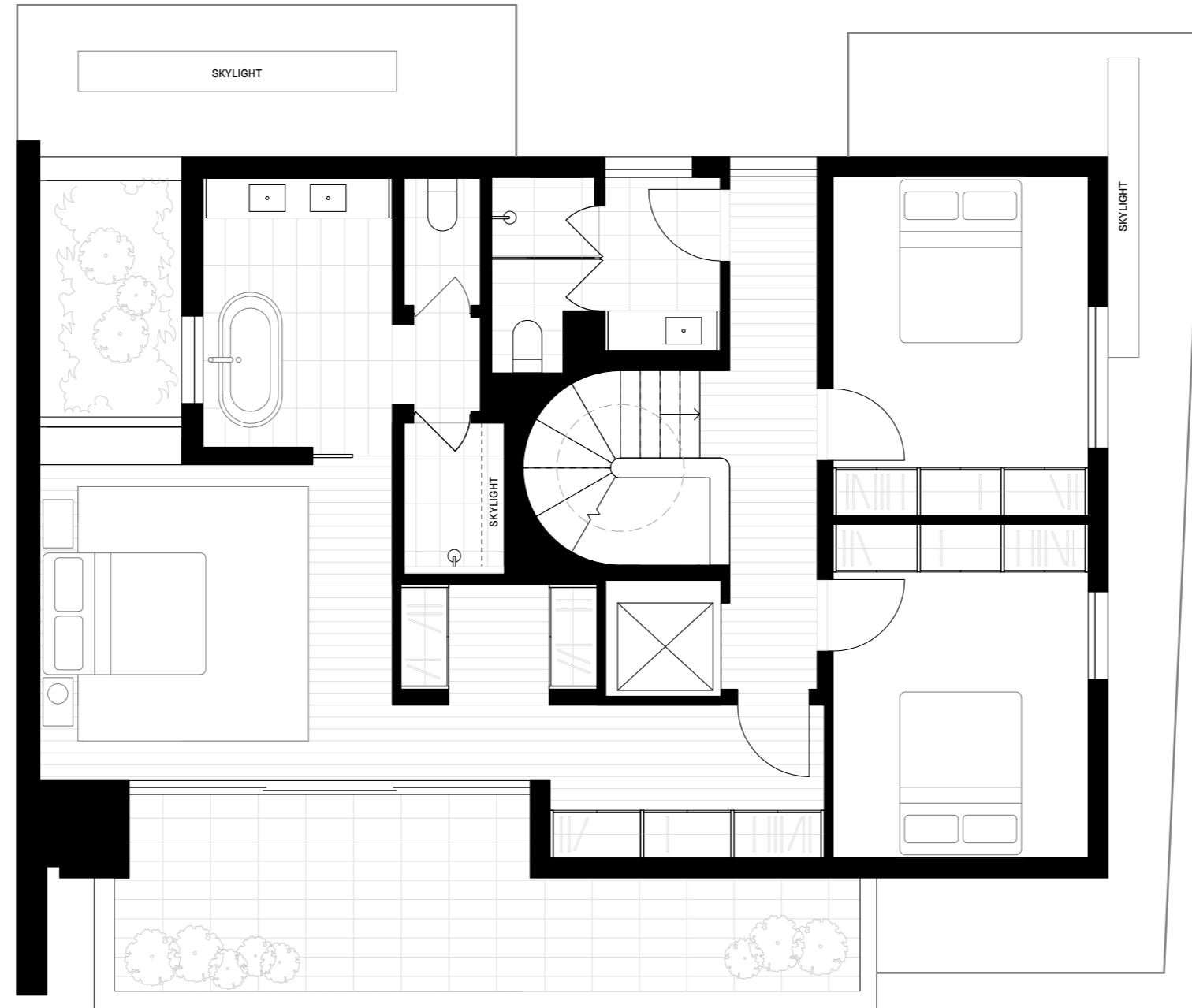
16 Irving Street — Malvern

First

Basement — 36m²
Ground Floor — 135m²
First Floor — 112m²
Total Internal — 283m²

Private Car park — 37m²
External Terraces — 61m²
Garden area — 35m²
Total Area — 416m²

Bed — 3
Bath — 3
Car — 2
Study — 1
Living — 1
Separate Lounge — 1
Second Floor Retreat — 1
Lift — 1
Storage/Cellar/Gym — 1



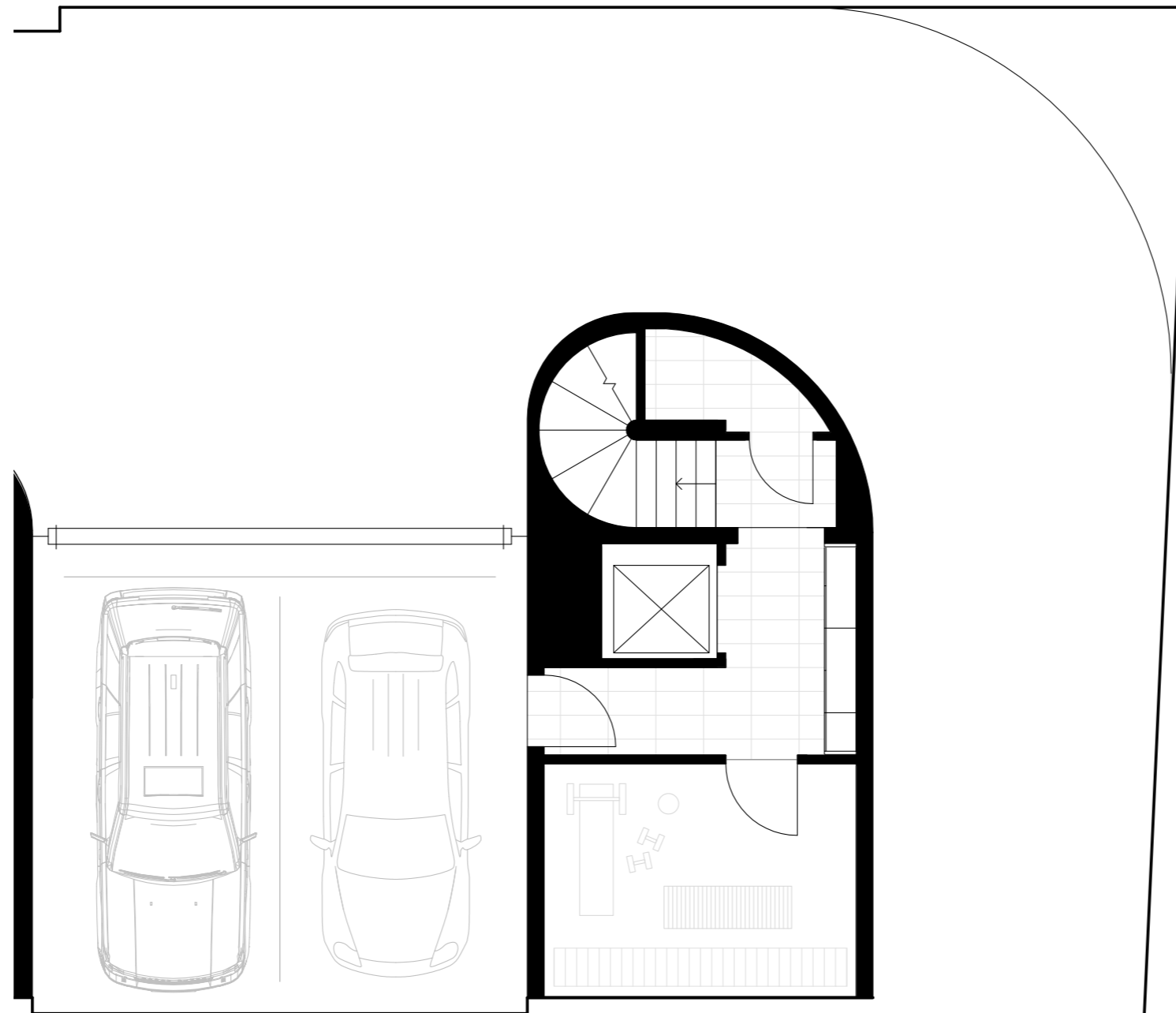
16 Irving Street — Malvern

Basement

Basement — 36m²
Ground Floor — 135m²
First Floor — 112m²
Total Internal — 283m²

Private Car park — 37m²
External Terraces — 61m²
Garden area — 35m²
Total Area — 416m²

Bed — 3
Bath — 3
Car — 2
Study — 1
Living — 1
Separate Lounge — 1
Second Floor Retreat — 1
Lift — 1
Storage/Cellar/Gym — 1



Scale 1:75
0 1.5 3 4.5m

